

# LAZER

H I G H P E R F O R M A N C E L I G H T I N G



## **FORD RANGER** **ROOF RAIL MOUNTING KIT** **FOR T-24 EVOLUTION**

---

**FITTING INSTRUCTIONS**

**ANLEITUNG**

**INSTRUCTIONS**

**INSTRUCCIONES**

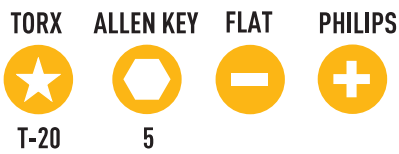
## WHAT'S INCLUDED

- 2x STAINLESS STEEL MOUNTING BRACKET (LH/RH)
- 1x ANTI-THEFT FASTENER SET (VARIOUS SIZES)
- 1x CARBON SPACER SET (VARIOUS SIZES)
- 4x M6 FASTENERS plus WASHERS
- 2x CABLE GROMMETS
- 1x VHB CLEANING SACHET
- 2x BUTT CONNECTORS

## DIFFICULTY LEVEL



## TOOLS REQUIRED



## **STEP 1: HEADLINING REMOVAL**

1. Remove the grab handles, Sunvisors and brackets



2. Remove interior lights and 'A' Pillar trims.



3. Remove the 'B' and 'C' pillar trims (the top of the seatbelt will need to be removed for this).

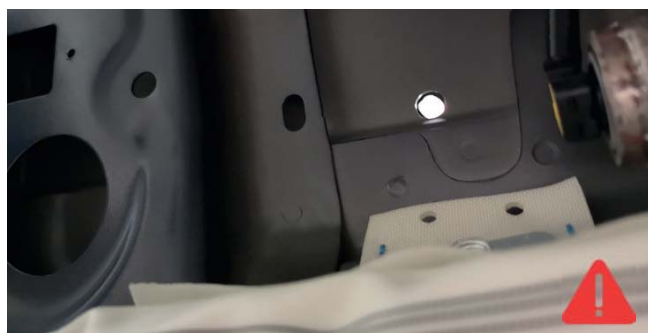
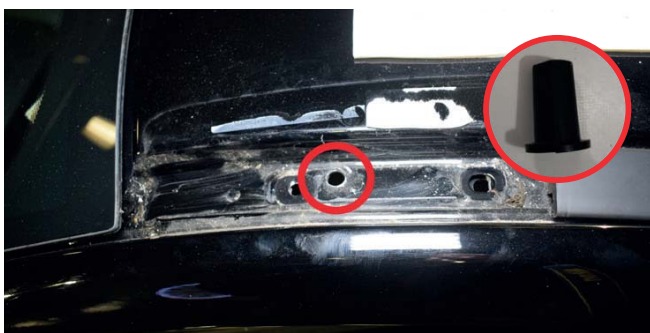


4. Pull down the door rubber seals and the roof lining will now be free to drop down.

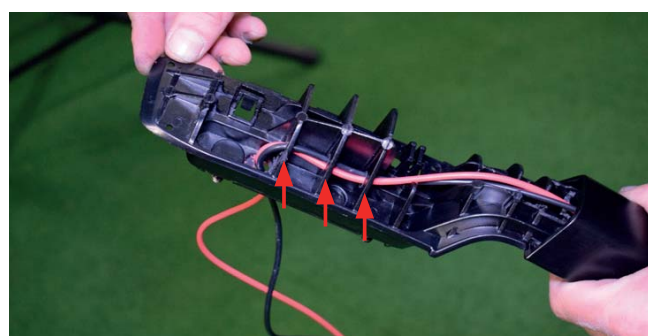
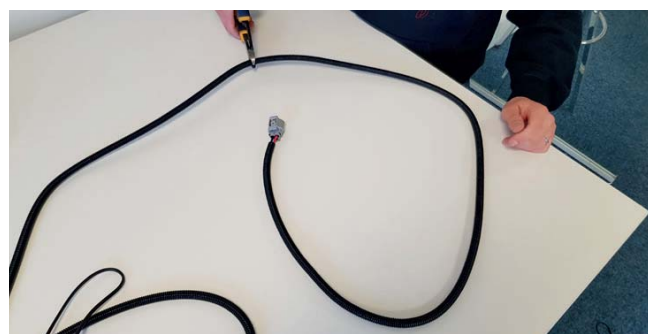


## STEP 2: FITTING THE BRACKETS AND PREPARE WIRING

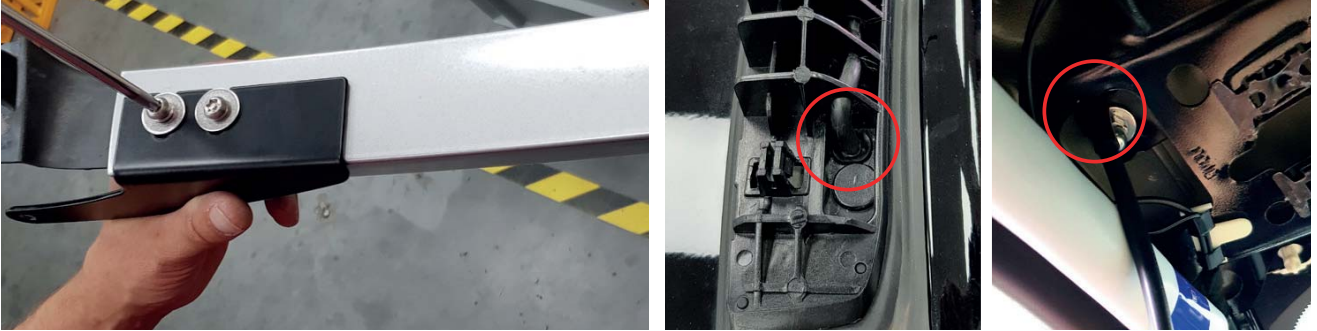
1. After removing both roof rails; disassemble the front of the **left** roof rail.
2. Locate a suitable location on the roof rail bracket where you can drill a 9mm hole through the bracket and the roof, then insert cable grommet. (check the underside of the roof to ensure the area is clear - e.g Airbag systems)



3. Drill a 8mm hole 90mm from the top of the **left** roof rail and insert 2nd cable grommet.
4. Cut off the connector and feed the cable through the pre-drilled hole as per the previous step.
5. Drill three 9mm holes to route the cable as indicated below. Then slide the roof rail bracket inside the rail.



6. Reassemble the drivers roof rail and use included washers and bolts to mount the brackets on both rails, these will replace the standard Torx bolts.
7. Route the cable through the roof and the cable grommet supplied, ensuring you are sealing any holes with sealant (VHB wipes included to wipe and prepare surface before applying sealant).



8. Mount the light bar using the supplied spacers, washers and 70mm bolts.



10. re-connect the wiring harness together using the 2x heat-shrink butt splice within the head lining.
11. Route the power cable down the left pillar and into the footwell while avoiding the airbag, secure with cable ties.



### **STEP 3: WIRING WITH SWITCH**

1. Install the relay and connect the live and earth to the battery.



2. Route Switch and light bar cable through the grommet and reinstall grommet.

3. Find a suitable location for switch mounting, then drill 20mm hole. Connect crimp terminals to switch.



### **STEP 4: TEST LIGHT BAR IS WORKING CORRECTLY BEFORE YOU RE-ASSEMBLE VEHICLE**



**Thank you for choosing a Lazer Lamps product.**  
Vielen Dank dafür, dass Sie sich für ein Produkt von Lazer Lamps entschieden haben.  
Merci pour choisir un produit de Lazer Lamps.  
Gracias por la seleccion de productos de Lazer Lamps.

**LAZER**  
HIGH PERFORMANCE LIGHTING

**T:** +44 (0)1992 677374

**E:** SALES@LAZERLAMPS.COM

**W:** WWW.LAZERLAMPS.COM

Lazer Lamps Ltd, Units 1&2 Harlow Mill Business Centre, Riverway, Harlow,  
Essex. CM20 2FD. United Kingdom



MADE IN THE UK



/LAZERLAMPS



/LAZERLAMPS